

# UNIVERSITY PLACE

University Place is located in the heart of Chapel Hill, in the vibrant Triangle region of North Carolina. Considered a premier shopping destination, it's anchored by Silverspot Cinema and Southern Season, the nationally recognized gourmet retailer.



## THE PROJECT

- Unique mix of national and best-in-class local retailers, combined with outstanding entertainment, dining, arts and fitness opportunities delivers an award-winning shopping experience.
- University Place is strategically positioned on Route 15/501, centrally located in the heart of Chapel Hill, less than three miles from the prestigious University of North Carolina, with an annual average enrollment of 30,000 students.
- The median household income within a 5-mile radius is \$96,394, jumping to \$117,531 within a 1-mile radius.
- Recent accolades for Chapel Hill published in Forbes, Money & Expansion Management include One of the Best Places to Raise your Kids, Best City for Entrepreneurs, and Best Place to Live in the South.



201 South Estes Drive  
Chapel Hill, NC 27514

## DEMOGRAPHICS

### 1 MILE

### 3 MILE

### 5 MILE

Population	6,944	65,453	124,810
Households	2,971	25,037	50,753
HH Income	\$132,955	\$105,755	\$107,141

Source: SitesUSA 2017 Estimates

## LEASING

Chuck Taylor  
561-807-1002  
Chuck.Taylor@MadisonMarquette.com

Nancy Kitterman  
919-904-4516  
Nancy.Kitterman@MadisonMarquette.com

## ONLINE

[universityplacenc.com](http://universityplacenc.com)

[facebook.com/UniversityPlaceNC](https://www.facebook.com/UniversityPlaceNC)

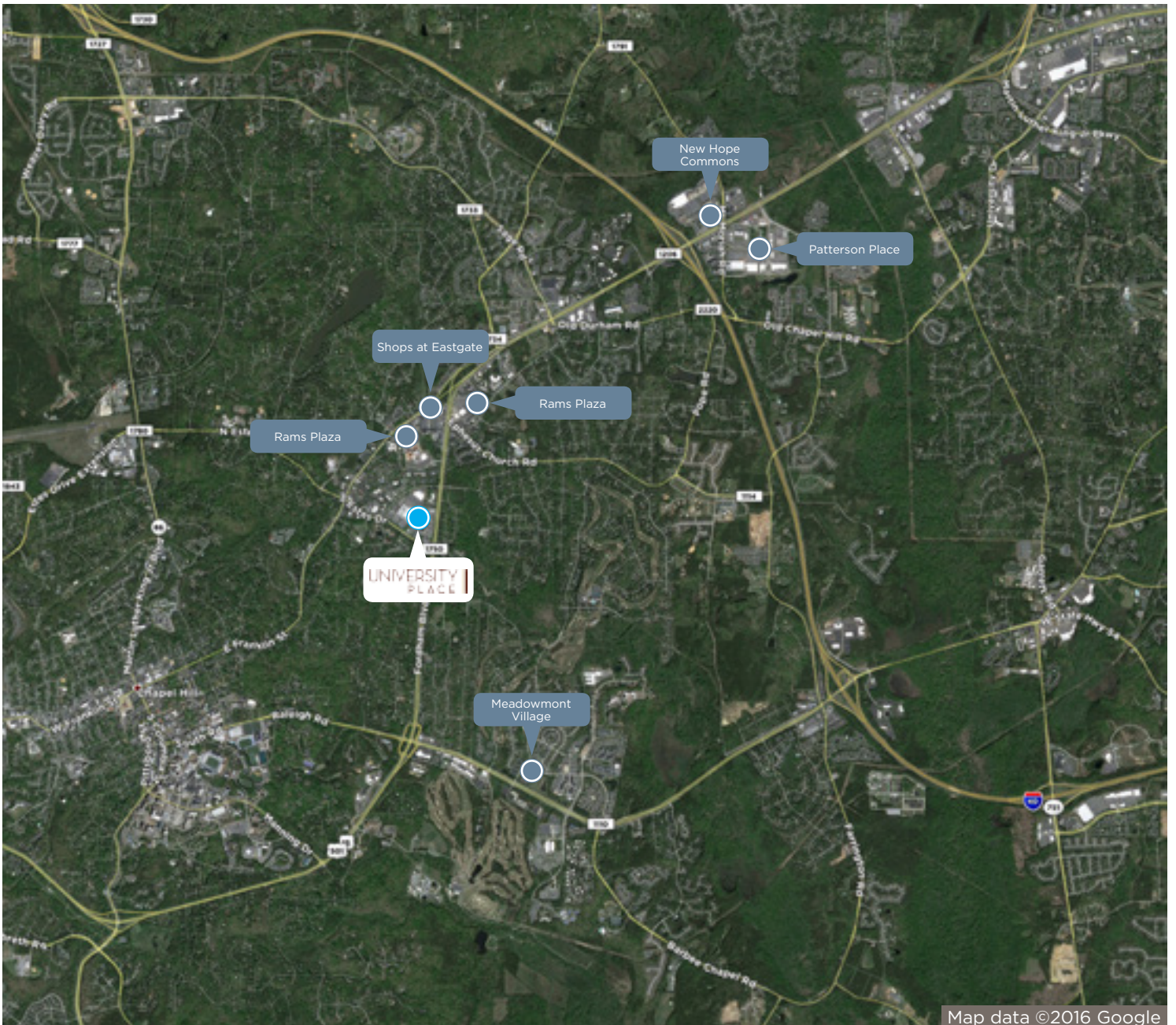
[@UPlaceNC](https://twitter.com/UPlaceNC)

[universityplacenc](https://www.instagram.com/universityplacenc)









Map data ©2016 Google



**LEASING**

Chuck Taylor • 561-807-1002 • [Chuck.Taylor@MadisonMarquette.com](mailto:Chuck.Taylor@MadisonMarquette.com)  
Nancy Kitterman • 919-904-4516 • [Nancy.Kitterman@MadisonMarquette.com](mailto:Nancy.Kitterman@MadisonMarquette.com)

