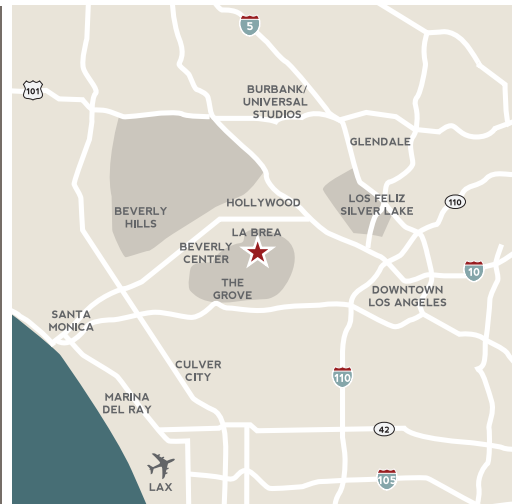


La Brea, an urban adaptive reuse of eleven buildings featuring retail, dining, and creative offices and includes 169-space parking garage. The 90,000-square-foot project highlights each building's characteristics, including wood truss ceilings, exposed brick and steel beams.



THE PROJECT

- Strategically located amidst high-density residential and studio production facilities.
- High-end fashion, accessories, home furnishings, specialty dining and creative office space round up the merchandise mix.
- Part of the former Design District of Los Angeles, including the iconic Continental Graphics building, the La Brea neighborhood is powerfully influenced by fashion and film. Neighboring retailers include American Rag, Stussy, General Quarters, Union to name a few.
- The property features a curated mix of emerging national and local retail and dining brands, including Garrett Leight, Schott NYC, Steven Alan, Arc' Tyrex, Kelly Cole, The Sycamore Kitchen, SugarFISH, Bonobos, Ody's & Penelope, Undeafated and Stone Island.



181 S. La Brea Ave.
Los Angeles, CA 90036

DEMOGRAPHICS

	1 MILE	3 MILE	5 MILE
Population	44,099	479,567	1,083,214
Households	22,421	215,854	449,759
HH Income	\$107,086	\$80,848	\$79,755

Source: SitesUSA 2015 Estimates

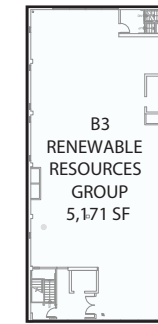
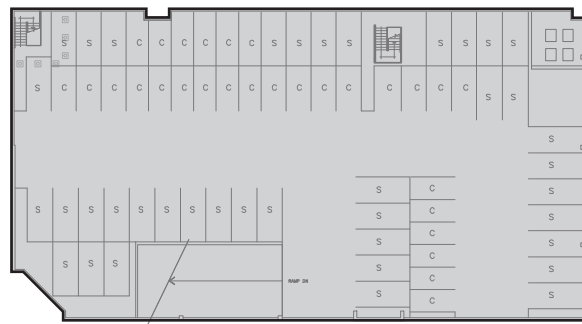
LEASING

Hedy Veverka
Hedy.Veverka@MadisonMarquette.com
415.613.5813

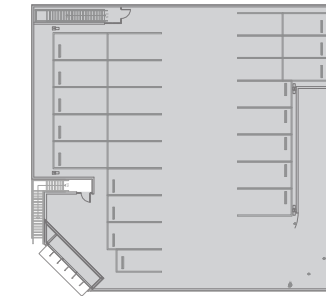
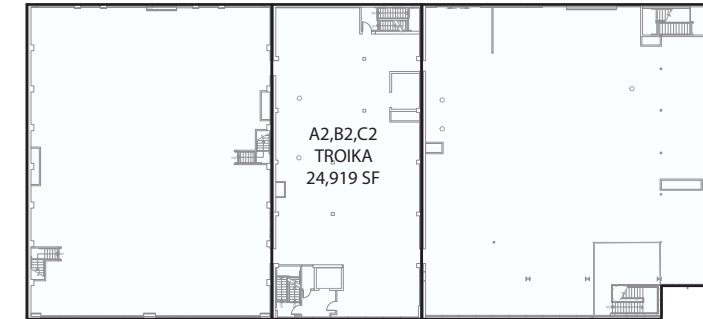
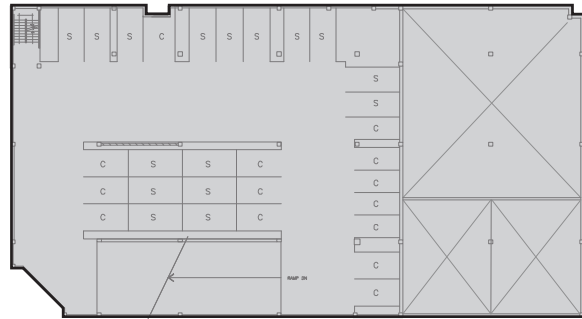
ONLINE

- 🌐 districtlabrea.com
- 📱 @DistrictLaBrea
- 📘 facebook.com/DistrictLaBrea

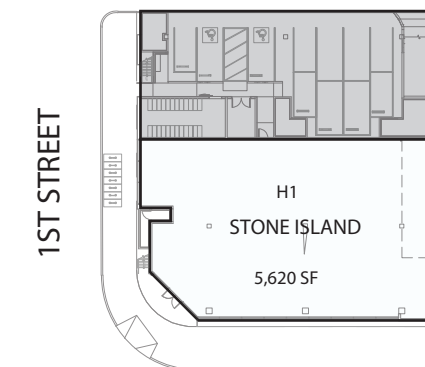




THIRD LEVEL



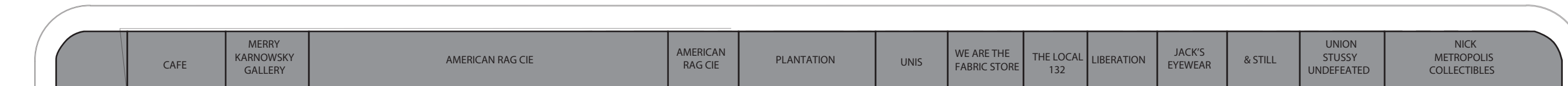
SECOND LEVEL



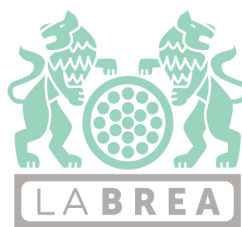
2ND STREET

1ST STREET

LA BREA AVENUE

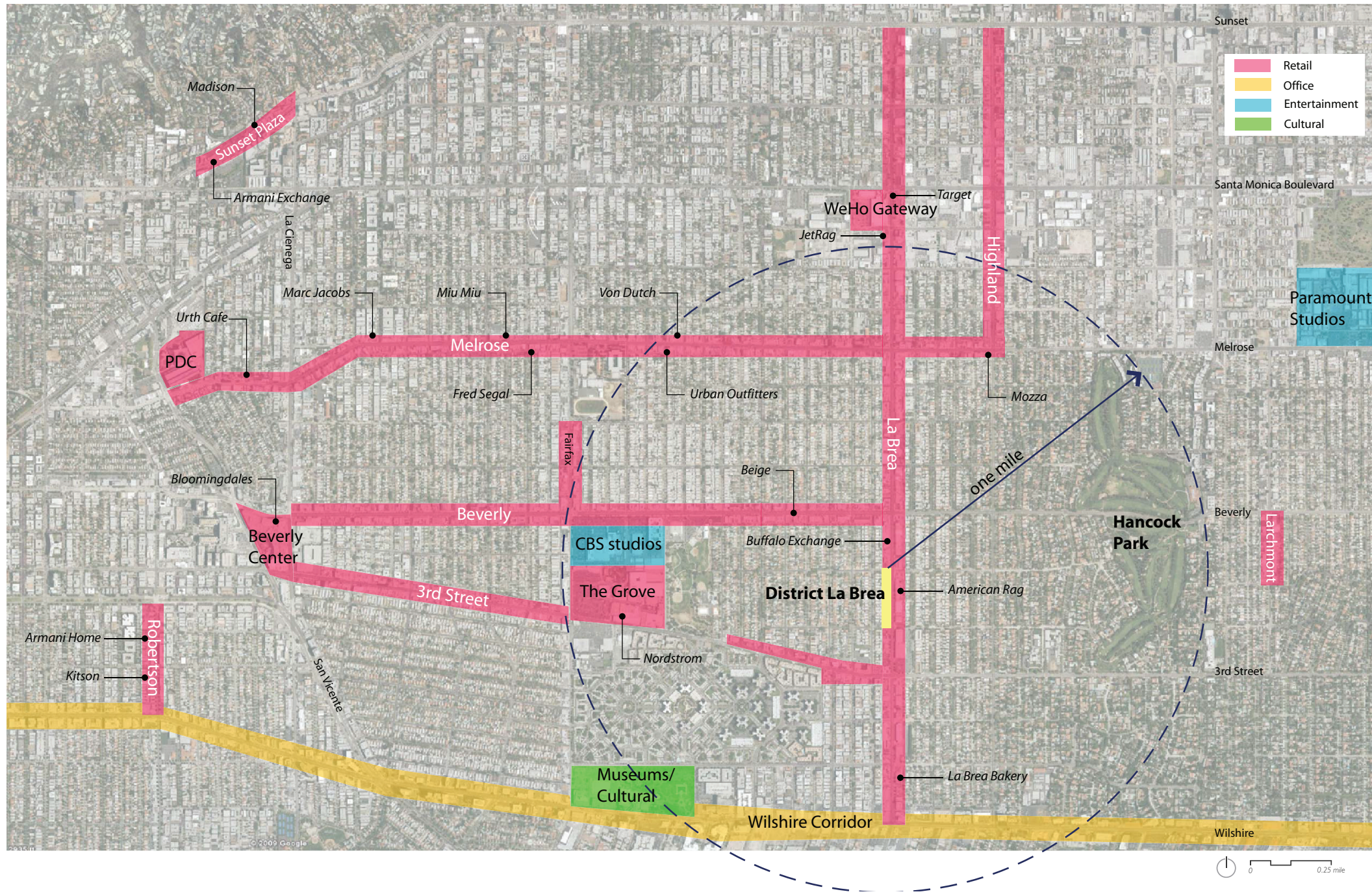


GROUND LEVEL



DISCLAIMER: THIS PLAN INDICATES THE GERNAL LAYOUT OF THE AREA DEPICTED AND IS NOT A WARRANTY, REPRESENTATION OR AGREEMENT ON THE PART OF LANDLORD THAT THE EXISTING CONDITIONS WILL BE EXACTLY AS DEPICTED HEREIN.



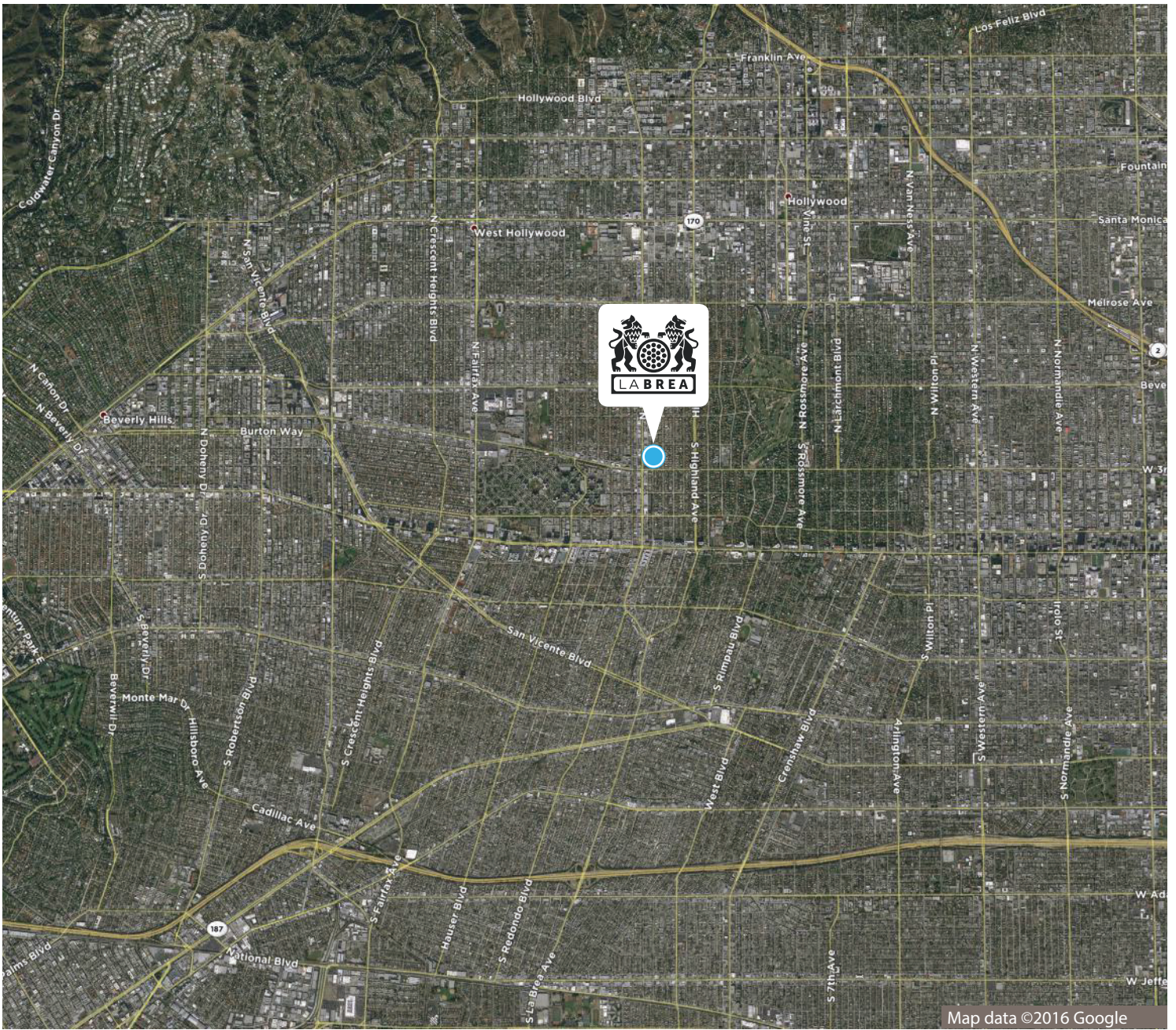


- Retail
- Office
- Entertainment
- Cultural

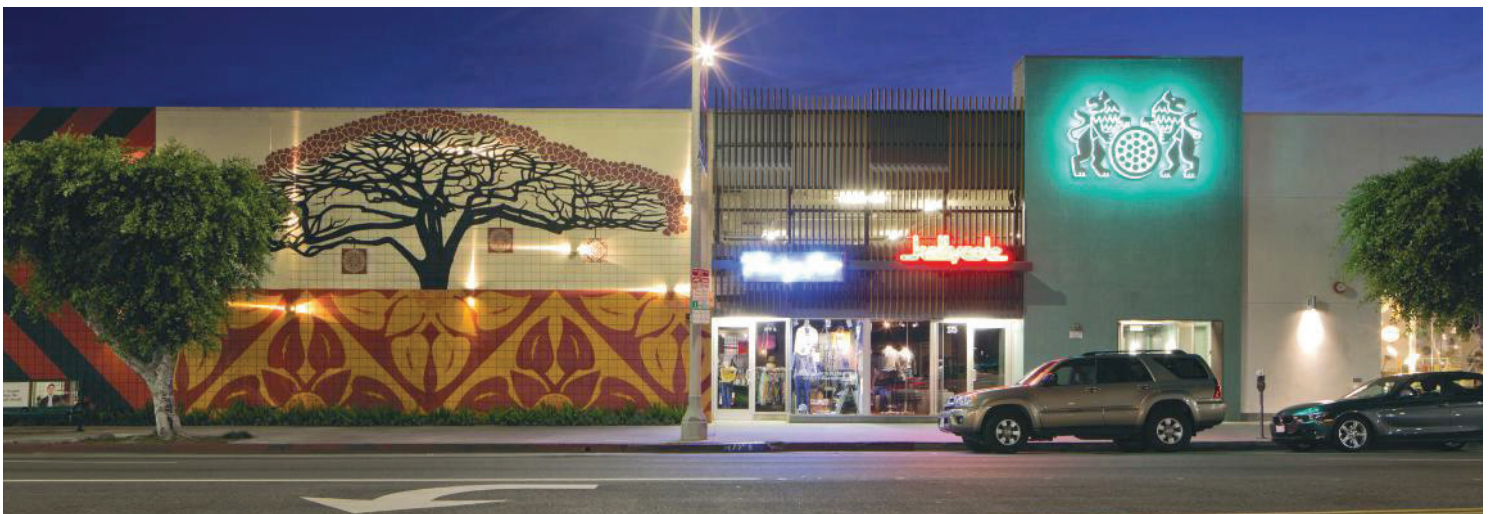
Santa Monica Boulevard
 Melrose
 Paramount Studios

Beverly
 Hancock Park
 Larchmont
 3rd Street

Wilshire
 0 0.25 mile



Map data ©2016 Google



LEASING

Hedy Veverka 415.613.5813

