

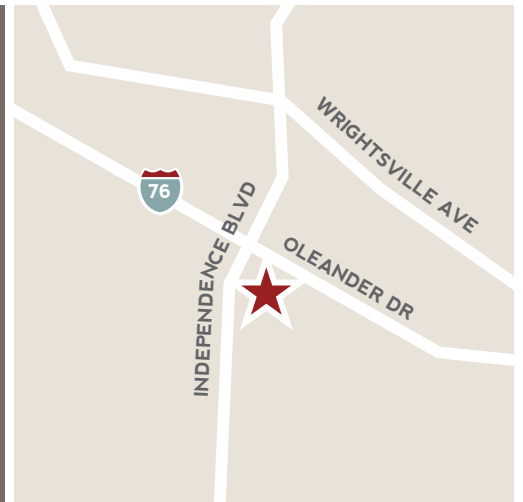
# INDEPENDENCE MALL

Independence Mall, a one story regional mall, centrally located on Oleander Dr. in Wilmington's mid-town district. This main artery is a thoroughfare through New Hanover Co. connecting the river to the sea. Mid-town continues to attract major national tenants; Panera Bread, Whole Foods, Trader Joe's and Starbucks have all recently opened on this corridor.



## THE PROJECT

- The mall encompasses a total GLA of over 1 million square feet and is anchored by Belk, Dillard's JCPenny and Sears.
- Independence Mall has a traditional retailer mix, featuring a food court and numerous family entertainment opportunities.
- The mall is located in the central portion of the City of Wilmington, 3 miles from the historic downtown district and minutes from area beaches.
- The trade area is also experiencing a residential housing boom with 4,600 new homes & luxury apartment units planned within a 5 mile radius.



3500 Oleander Drive  
Wilmington, NC 28403

## DEMOGRAPHICS

### 1 MILE

### 3 MILE

### 5 MILE

Population	6,269	81,224	137,043
Households	3,194	37,142	61,283
HH Income	\$78,614	\$53,920	\$66,728

Source: SitesUSA 2016 Estimates

## LEASING

Onur Yucelt  
215.399.5608

Onur.Yucelt@MadisonMarquette.com

## ONLINE

- 🌐 [shopindependencemall.com](http://shopindependencemall.com)
- 📱 [independencemallinc](https://www.facebook.com/independencemallinc)

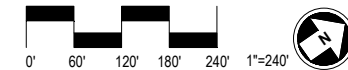




Onur Yucelt  
215-399-5608  
Onur.Yucelt@MadisonMarquette.com  
www.madisonmarquette.com

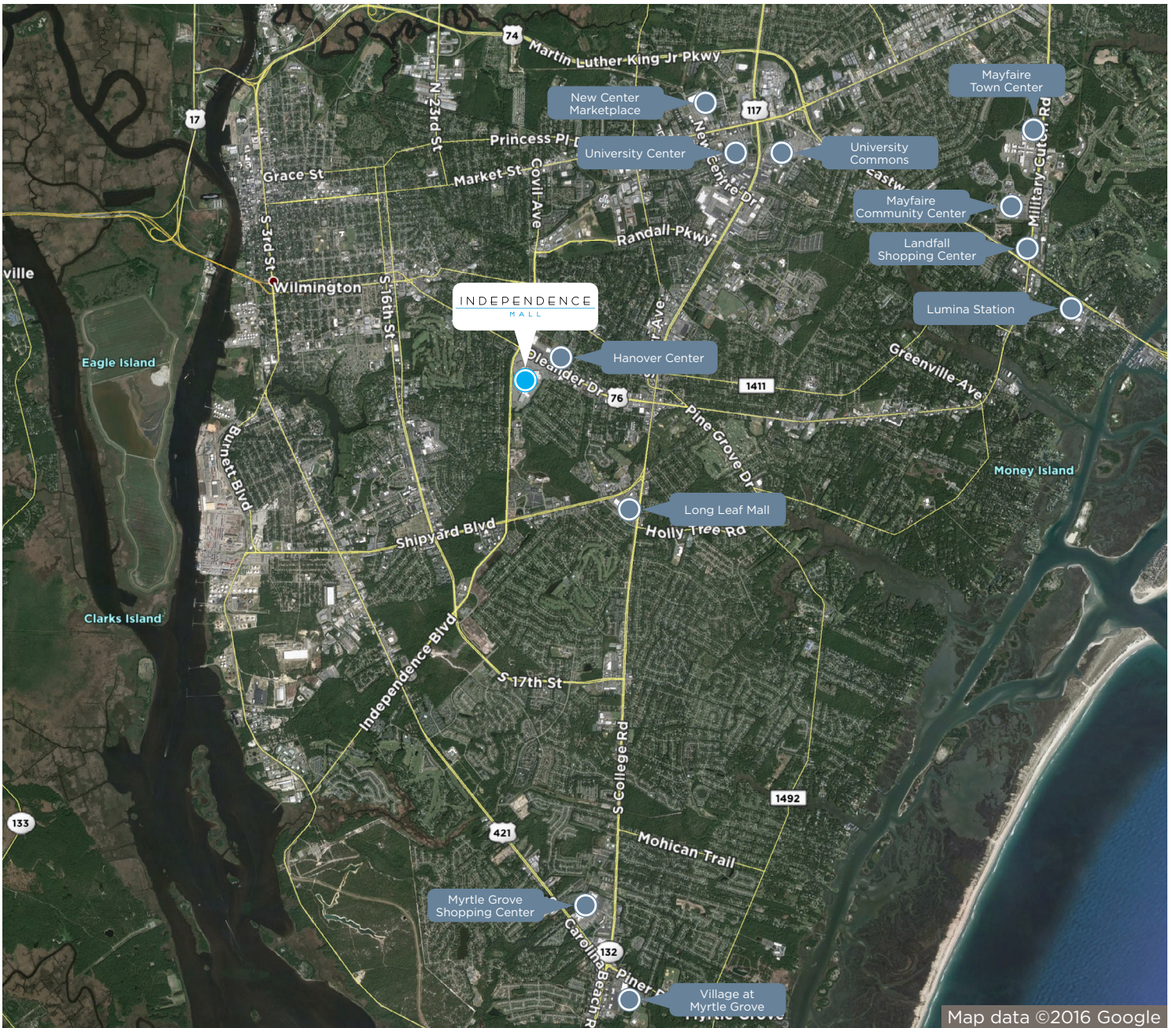
# INDEPENDENCE MALL

3500 OLEANDER DR, WILMINGTON, NC 28403



This plan is for the purpose of site location and general arrangement only, indicating relative store locations. It is not intended as an inducement or as representation that the identities of the occupants now or ever will be set forth herein. Landlord reserves the right to change the identities of the occupants, vary the uses, sizes, locations of buildings and add or eliminate buildings or improvements.

**SITE PLAN**  
12/1/2016



**LEASING**

Onur Yucelt • 215.399.5608 • Onur.Yucelt@MadisonMarquette.com

