

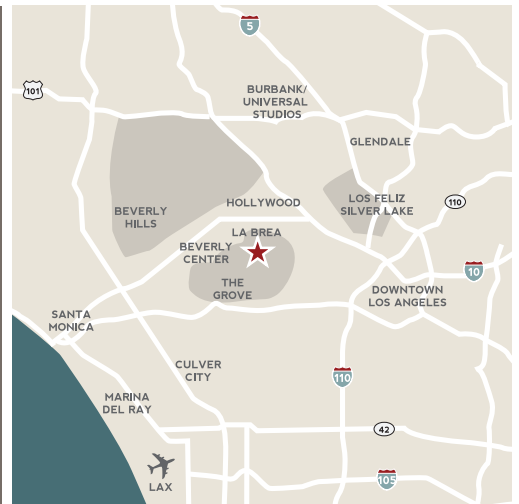


La Brea, a new urban adaptive reuse of eleven buildings featuring retail, dining, and creative offices and includes 125-space parking garage. The 90,000-square-foot project highlights each building's characteristics, including wood truss ceilings, exposed brick and steel beams.



THE PROJECT

- Strategically located amidst high-density residential and studio production facilities.
- High-end fashion, accessories, home furnishings, eco-urban home and specialty dining and creative office space round up the merchandise mix.
- Part of the former Design District of Los Angeles, including the iconic Continental Graphics building, the La Brea neighborhood is powerfully influenced by fashion and film.
- The property features a curated mix of emerging national and local retail and dining brands, including A+R, Garrett Leight, Steven Alan, Kelly Cole, The Sycamore Kitchen, SugarFISH, What Goes Around Comes Around, Bonobos, GANT, Ody's & Penelope, Undeafated and Stone Island.



181 S. La Brea Ave.
Los Angeles, CA 90036

DEMOGRAPHICS

1 MILE

3 MILE

5 MILE

| | | | |
|------------|-----------|----------|-----------|
| Population | 41,017 | 512,799 | 1,083,008 |
| Households | 20,763 | 232,285 | 451,872 |
| HH Income | \$118,931 | \$89,150 | \$90,535 |

Source: SitesUSA 2017 Estimates

LEASING

Hedy Veverka
415-613-5813
Hedy@hedyveverka.com

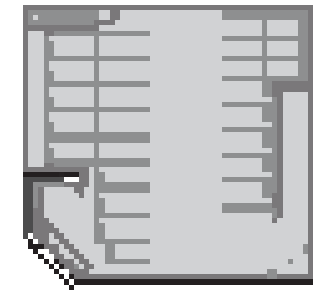
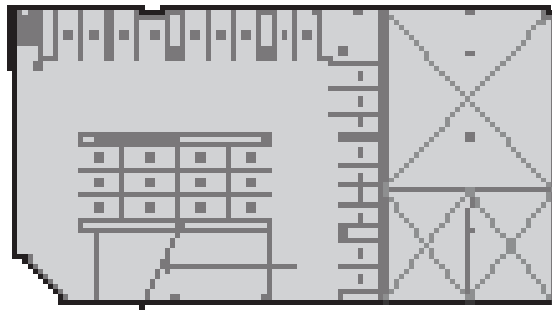
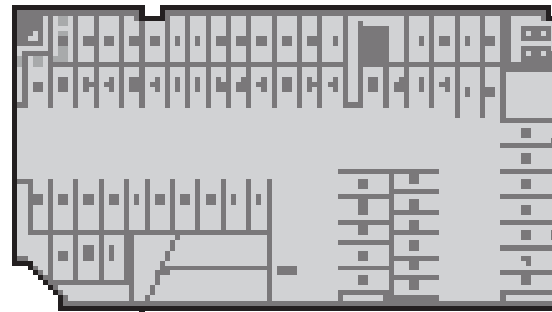
ONLINE

districtlabrea.com

[facebook.com/DistrictLaBrea](https://www.facebook.com/DistrictLaBrea)

[@DistrictLaBrea](https://twitter.com/DistrictLaBrea)

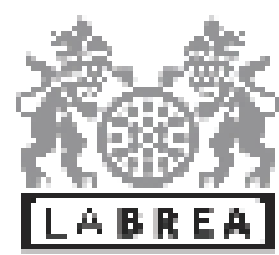




LABREA AVENUE

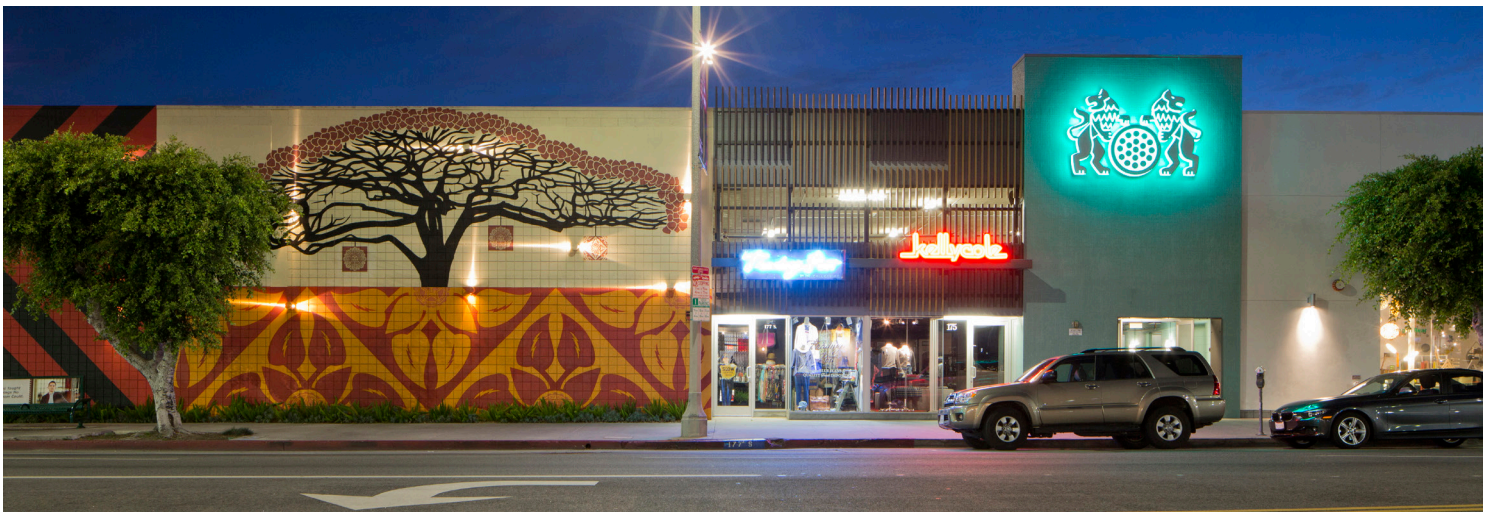
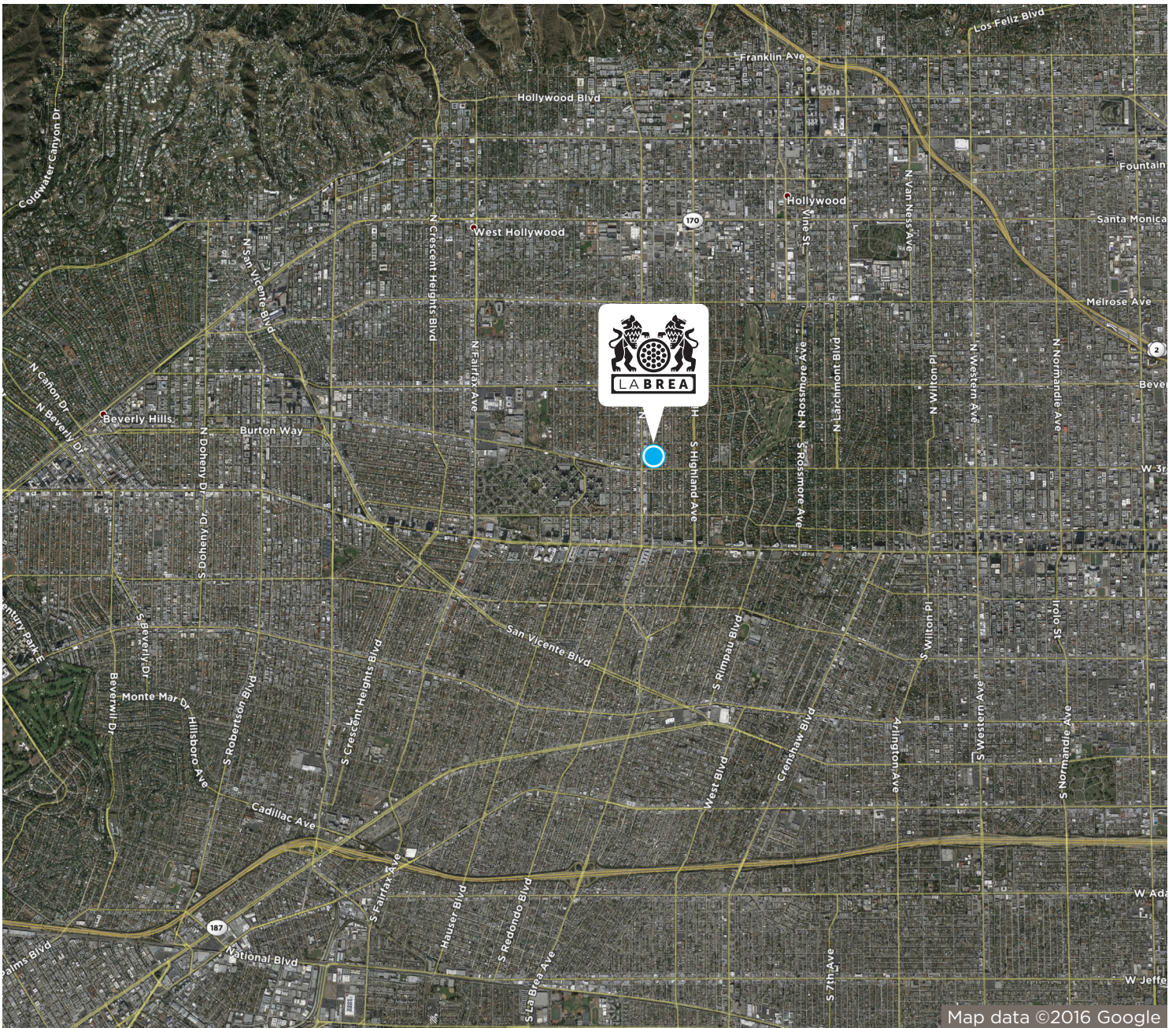


GROUND LEVEL



LABREA AVENUE, LABREA, CALIFORNIA
 A COMMUNITY DEVELOPMENT PROJECT
 A COMMUNITY DEVELOPMENT PROJECT
 A COMMUNITY DEVELOPMENT PROJECT





LEASING

Hedy Veverka • 415-613-5813 • Hedy@hedyveverka.com

